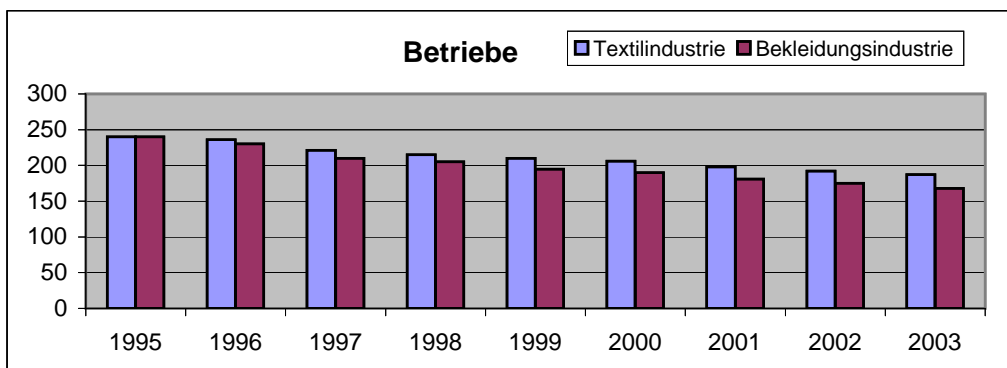
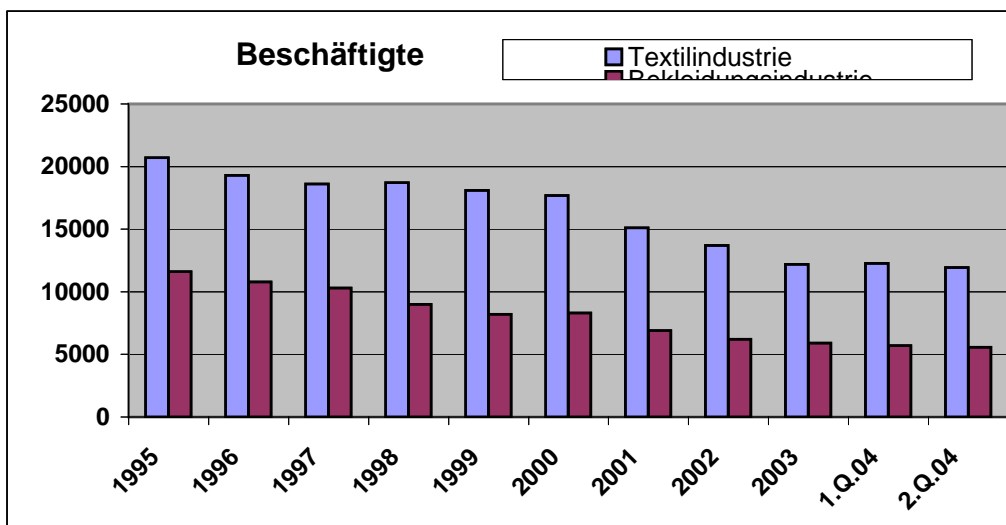


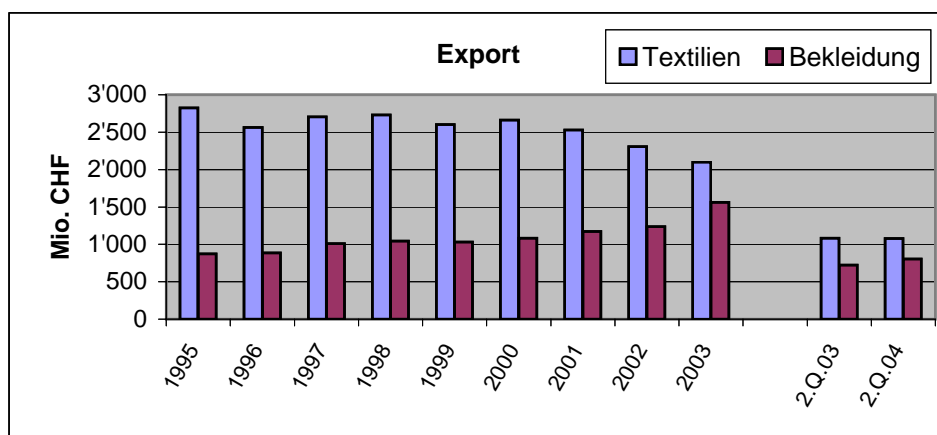
Betriebe	Textilindustrie	Bekleidungsindustrie
1995	240	240
1996	236	230
1997	221	210
1998	215	205
1999	210	195
2000	206	190
2001	198	181
2002	192	175
2003	187	168



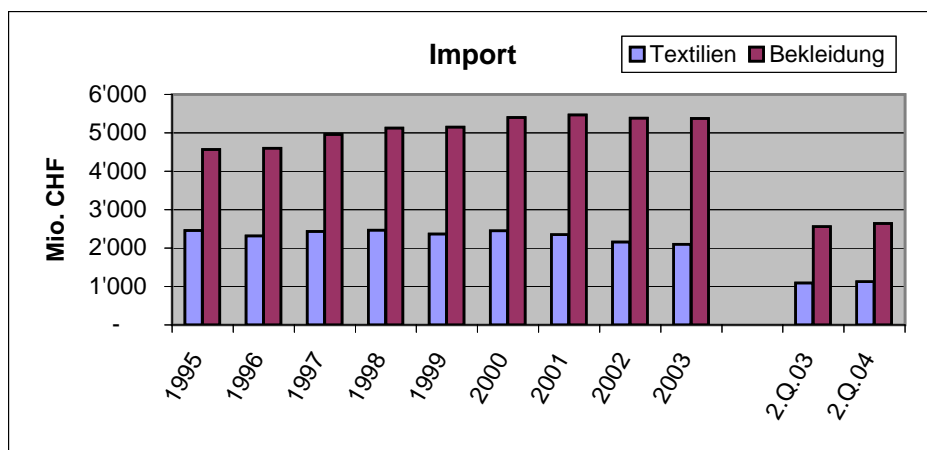
Beschäftigte	Textilindustrie	Bekleidungsindustrie
1995	20700	11600
1996	19300	10800
1997	18600	10300
1998	18700	9000
1999	18100	8200
2000	17700	8300
2001	15100	6900
2002	13700	6200
2003	12200	5900
1.Q.04	12260	5710
2.Q.04	11930	5570



Export	Textilien	Bekleidung
1995	2'823	873
1996	2'564	886
1997	2'703	1'010
1998	2'729	1'042
1999	2'600	1'030
2000	2'664	1'082
2001	2'531	1'172
2002	2'307	1'236
2003	2'098	1'560
2.Q.03	1081	725
2.Q.04	1078	804



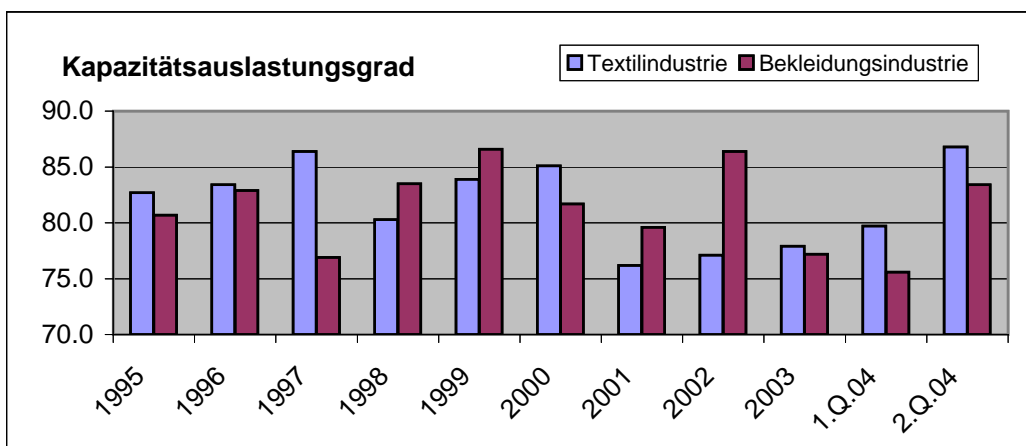
Import	Textilien	Bekleidung
1995	2'458	4'564
1996	2'313	4'599
1997	2'434	4'961
1998	2'469	5'126
1999	2'364	5'148
2000	2'452	5'396
2001	2'354	5'470
2002	2'155	5'385
2003	2'103	5'372
2.Q.03	1089	2'560
2.Q.04	1123	2'639



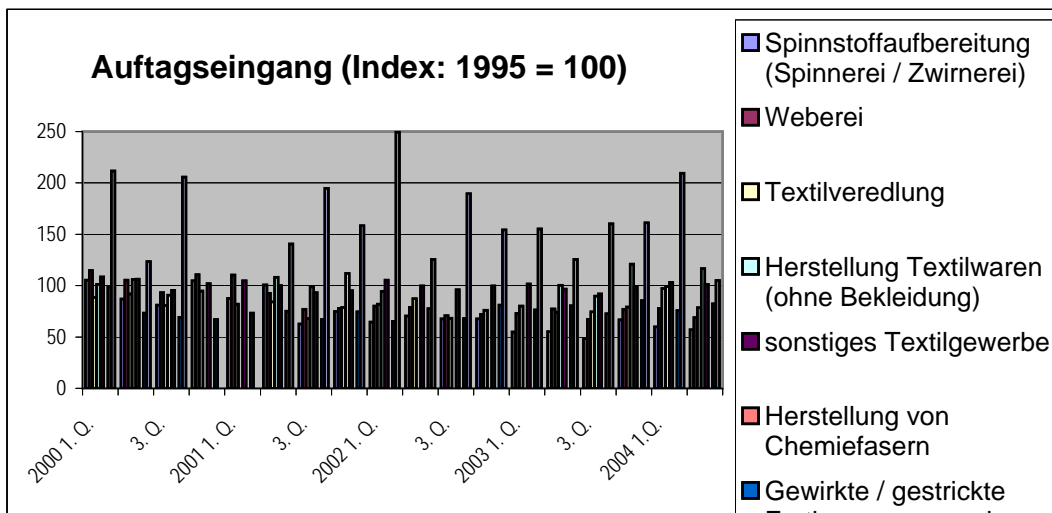
Kapazitätsauslastung

(4. Quartal)

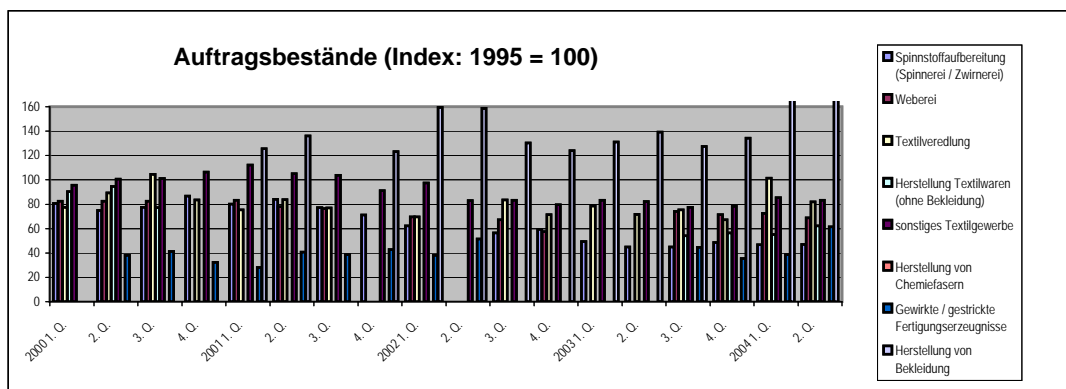
	Textilindustrie	Bekleidungsindustrie
1995	82.7	80.7
1996	83.4	82.9
1997	86.4	76.9
1998	80.3	83.5
1999	83.9	86.6
2000	85.1	81.7
2001	76.2	79.6
2002	77.1	86.4
2003	77.9	77.2
1.Q.04	79.7	75.6
2.Q.04	86.8	83.4



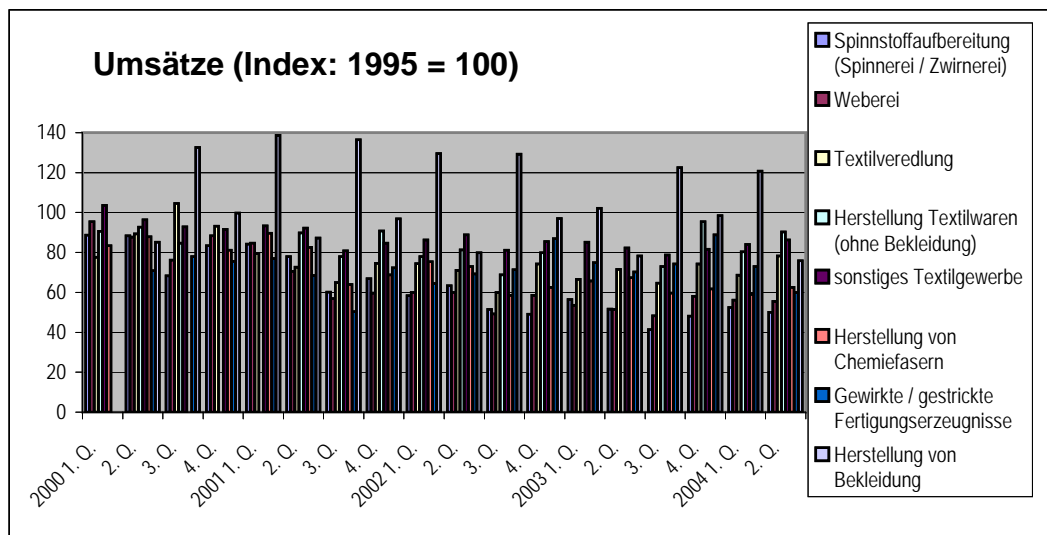
Auftragseingang (Indexe)		Spinnstoffaufbereitung (Spinnerei / Zwirnerei)	Weberei	Textilveredlung	Herstellung Textilwaren (ohne Bekleidung)	sonstiges Textilgewerbe	Herstellung von Chemiefasern	Gewirkte / gestrickte Fertigungserzeugnisse	Herstellung von Bekleidung
1999	3. Q.	80.4	86.4	81.8	99.0	96.1	0.0	79.5	186.0
	4. Q.	80.7	102.7	90.3	126.1	99.9	0.0	88.7	137.1
2000	1. Q.	105.3	114.7	88.6	101.4	108.4	0.0	98.5	211.8
	2. Q.	86.9	105.5	92.1	105.9	106.3	0.0	73.2	123.3
	3. Q.	81.2	93.1	80.8	90.6	95.3	0.0	69.2	205.6
	4. Q.	104.7	110.7	94.8	0.0	102.0	0.0	67.1	0.0
2001	1. Q.	87.5	110.5	82.0	0.0	104.8	0.0	73.1	0.0
	2. Q.	100.6	92.5	84.2	108.2	100.1	0.0	75.1	140.6
	3. Q.	62.8	77.1	68.0	98.8	93.3	0.0	66.9	194.8
	4. Q.	74.9	77.8	78.9	112.0	95.1	0.0	74.5	158.3
2002	1. Q.	64.6	80.0	81.9	94.4	105.4	0.0	65.1	249.4
	2. Q.	70.6	78.9	87.3	0.0	99.9	0.0	77.6	125.5
	3. Q.	67.7	70.8	68.4	0.0	96.0	0.0	67.9	189.5
	4. Q.	67.7	71.9	76.2	0.0	99.8	0.0	80.9	154.2
2003	1. Q.	54.8	72.9	80.0	0.0	101.5	0.0	76.4	155.3
	2. Q.	55.3	77.3	74.3	100.4	96.7	0.0	80.5	125.7
	3. Q.	48.7	67.1	74.6	89.9	92.0	0.0	72.5	160.1
	4. Q.	66.7	76.9	79.2	121.1	98.6	0.0	85.3	161.2
2004	1. Q.	60.0	77.9	97.2	99.1	103.2	0.0	75.9	209.6
	2. Q.	56.9	68.9	78.7	116.7	101.2	0.0	82.3	105.0



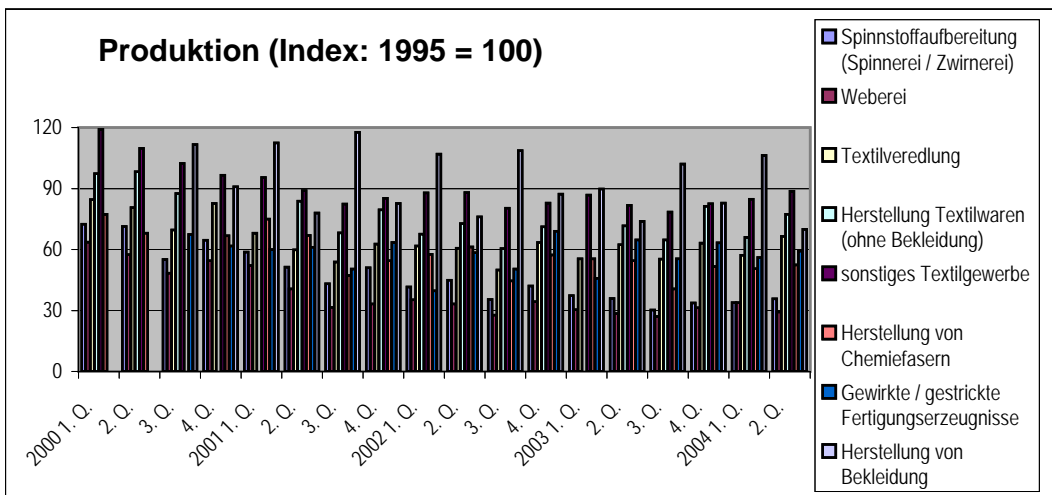
Auftragsbestand (Indexe)		Spinnstoffaufbereitung (Spinnerei / Zwirnerei)	Weberei	Textilveredlung	Herstellung Textilwaren (ohne Bekleidung)	sonstiges Textilgewerbe	Herstellung von Chemiefasern	Gewirke / gestrickte Fertigungserzeugnisse	Herstellung von Bekleidung
1999	3. Q.	76.9	82.5	93.3	92.6	86.7	0.0		
	4. Q.	75.9	82.9	79.4	93.2	92.6	0.0		
2000	1. Q.	80.6	82.4	77.6	90.5	95.7	0.0		
	2. Q.	74.8	82.6	89.4	94.7	100.5	0.0	38.2	
	3. Q.	77.6	82.6	104.6	77.2	101.1	0.0	41.3	
	4. Q.	86.7	0.0	83.6	0.0	106.5	0.0	32.2	
2001	1. Q.	80.2	83.2	75.3	0.0	112.2	0.0	28.0	125.7
	2. Q.	84.2	77.9	83.7	0.0	105.1	0.0	40.8	136.2
	3. Q.	77.2	76.5	77.0	0.0	103.7	0.0	38.5	0.0
	4. Q.	71.2	0.0	0.0	0.0	91.1	0.0	42.7	123.3
2002	1. Q.	62.2	69.6	69.5	0.0	97.4	0.0	38.2	159.6
	2. Q.	0.0	0.0	0.0	0.0	82.9	0.0	51.6	158.7
	3. Q.	56.5	67.2	83.6	0.0	83.4	0.0	0.0	130.4
	4. Q.	59.4	57.5	71.5	0.0	79.7	0.0	0.0	124.0
2003	1. Q.	49.3	0.0	78.6	0.0	83.2	0.0	0.0	131.2
	2. Q.	44.8	0.0	71.6	0.0	82.3	0.0	0.0	139.2
	3. Q.	45.0	74.2	75.3	54.1	77.5	0.0	44.6	127.5
	4. Q.	48.5	71.4	67.3	56.5	78.4	0.0	35.4	134.2
2004	1. Q.	46.8	72.6	101.4	55.2	85.3	0.0	38.7	172.0
	2. Q.	47.0	68.8	82.1	62.3	83.2	0.0	61.6	167.9



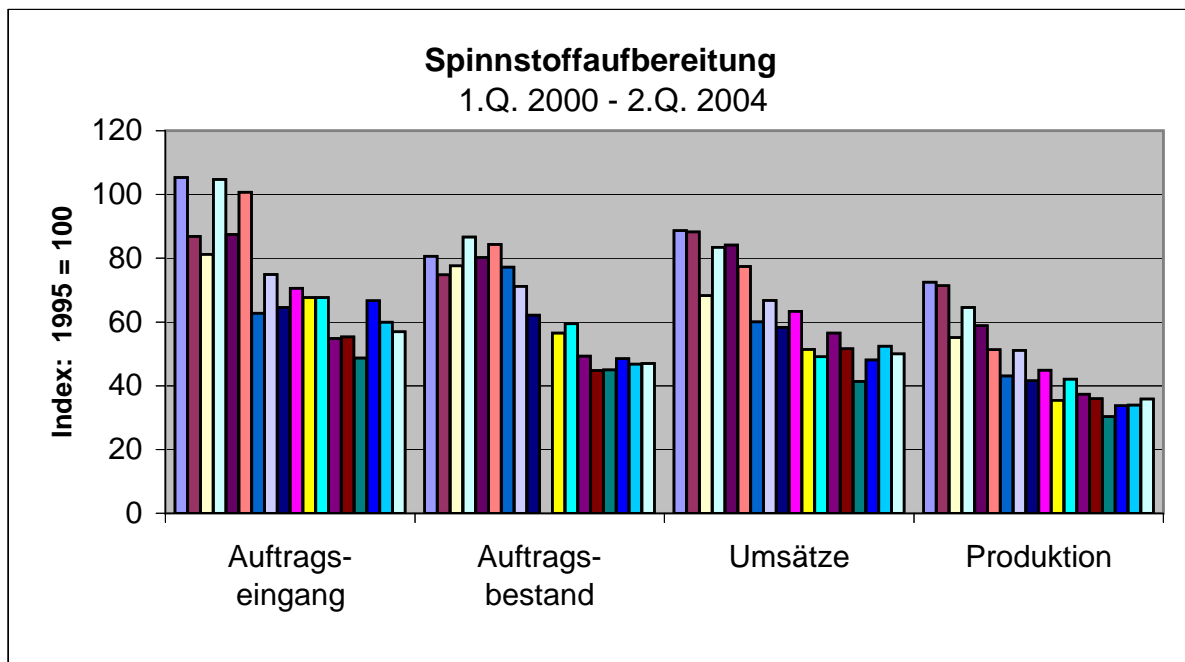
Umsätze (Indexe)		Spinnstoffaufbereitung (Spinnerei / Zwirnerei)	Weberei	Textilveredlung	Herstellung Textilwaren (ohne Bekleidung)	sonstiges Textilgewerbe	Herstellung von Chemiefasern	Gewirke / gestrickte Fertigungserzeugnisse	Herstellung von Bekleidung
1999	3. Q.	68.3	72.5	93.3	93.9	95.0	0.0		
	4. Q.	76.7	86.9	79.4	105.7	93.7	0.0		
2000	1. Q.	88.7	95.4	77.6	90.6	103.6	83.4		
	2. Q.	88.3	87.7	89.4	92.7	96.4	87.9	70.9	85.1
	3. Q.	68.3	76.2	104.6	84.6	92.9	0.0	77.9	132.7
	4. Q.	83.4	88.3	93.1	0.0	91.5	81.2	75.6	99.8
2001	1. Q.	84.2	84.7	79.4	0.0	93.4	89.6	77.0	138.7
	2. Q.	77.9	70.6	72.7	89.8	92.2	82.6	68.5	87.2
	3. Q.	60.1	56.9	64.9	77.9	80.9	64.0	50.4	136.5
	4. Q.	66.8	59.6	74.6	90.7	84.6	68.8	72.3	96.8
2002	1. Q.	58.3	60.0	74.4	78.0	86.3	75.3	64.4	129.6
	2. Q.	63.4	60.0	71.1	81.3	88.8	73.0	69.3	79.8
	3. Q.	51.4	49.3	60.0	68.8	81.1	58.6	71.3	129.3
	4. Q.	49.1	58.5	74.2	79.9	85.5	62.6	86.9	97.1
2003	1. Q.	56.5	53.6	66.5	0.0	85.1	65.7	74.9	102.1
	2. Q.	51.6	51.4	71.5	0.0	82.2	67.4	70.3	78.3
	3. Q.	41.4	48.3	64.6	72.9	78.7	59.6	74.3	122.5
	4. Q.	48.1	58.1	74.2	95.4	81.7	61.7	88.8	98.5
2004	1. Q.	52.4	56.2	68.7	80.4	84.0	59.0	72.9	120.7
	2. Q.	50.0	55.5	78.2	90.3	86.3	62.5	60.0	75.9



Produktion (Indexe)	Spinnstoffaufbereitung (Spinnerei / Zwirnerei)	Weberei	Textilveredlung	Herstellung Textilwaren (ohne Bekleidung)	sonstiges Textilgewerbe	Herstellung von Chemiefasern	Gewirke / gestrickte Fertigungserzeugnisse	Herstellung von Bekleidung
1999 3. Q.	52.4	46.8	73.0	101.0	103.7	0.0		
4. Q.	63.5	59.4	95.4	98.0	108.9	0.0		
2000 1. Q.	72.5	63.7	84.6	97.3	119.1	77.4		
2. Q.	71.4	57.5	80.7	98.2	109.7	68.0		
3. Q.	55.1	48.4	69.6	87.6	102.4	0.0	67.4	111.6
4. Q.	64.6	54.5	82.6	0.0	96.5	66.7	61.7	90.9
2001 1. Q.	58.8	52.2	68.1	0.0	95.4	75.0	60.0	112.5
2. Q.	51.3	40.7	59.8	83.8	88.9	67.0	61.1	77.9
3. Q.	43.1	31.5	53.9	68.2	82.3	47.3	50.4	117.7
4. Q.	51.1	33.2	62.7	79.6	85.2	54.5	63.4	82.6
2002 1. Q.	41.6	35.2	61.8	67.6	87.9	57.6	39.7	106.9
2. Q.	44.9	33.3	60.7	72.8	88.1	61.2	58.4	76.1
3. Q.	35.4	27.7	50.0	60.5	80.3	44.6	50.4	108.7
4. Q.	42.1	34.3	63.5	71.2	82.8	57.3	68.9	87.2
2003 1. Q.	37.4	30.4	55.5	0.0	86.7	55.4	45.8	89.8
2. Q.	35.9	28.5	62.4	71.6	81.7	54.5	64.8	73.9
3. Q.	30.3	27.1	55.3	64.7	78.4	40.7	55.4	102.1
4. Q.	33.7	31.3	63.1	81.2	82.5	51.7	63.3	82.9
2004 1. Q.	33.9	33.8	57.2	66.0	84.7	50.6	56.0	106.3
2. Q.	35.8	29.3	66.4	77.3	88.6	52.4	59.2	70.0

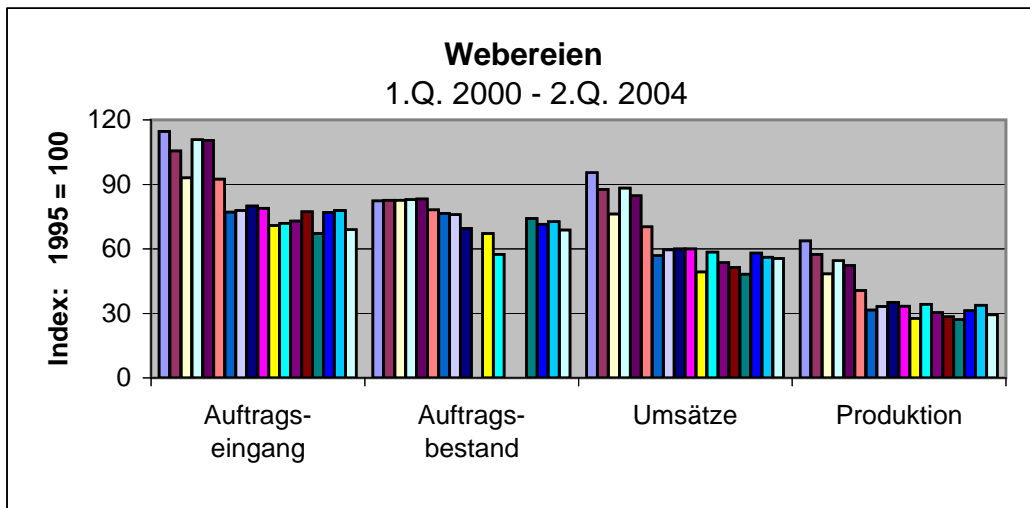


Spinnstoffaufbereitung (Spinnerei / Zwirnerei)		Auftrags- eingang	Auftrags- bestand	Umsätze	Produktion
1999	1. Q.				
	2. Q.				
	3. Q.	80.4	76.9	68.3	52.4
	4. Q.	80.7	75.9	76.7	63.5
2000	1. Q.	105.3	80.6	88.7	72.5
	2. Q.	86.9	74.8	88.3	71.4
	3. Q.	81.2	77.6	68.3	55.1
	4. Q.	104.7	86.7	83.4	64.6
2001	1. Q.	87.5	80.2	84.2	58.8
	2. Q.	100.7	84.4	77.4	51.3
	3. Q.	62.8	77.2	60.1	43.1
	4. Q.	74.9	71.2	66.8	51.1
2002	1. Q.	64.6	62.2	58.3	41.6
	2. Q.	70.6	0.0	63.4	44.9
	3. Q.	67.7	56.5	51.4	35.4
	4. Q.	67.7	59.4	49.1	42.1
2003	1. Q.	54.8	49.3	56.5	37.4
	2. Q.	55.3	44.8	51.6	35.9
	3. Q.	48.7	45.0	41.4	30.3
	4. Q.	66.7	48.5	48.1	33.7
2004	1. Q.	60.0	46.8	52.4	33.9
	2. Q.	56.9	47.0	50.0	35.8

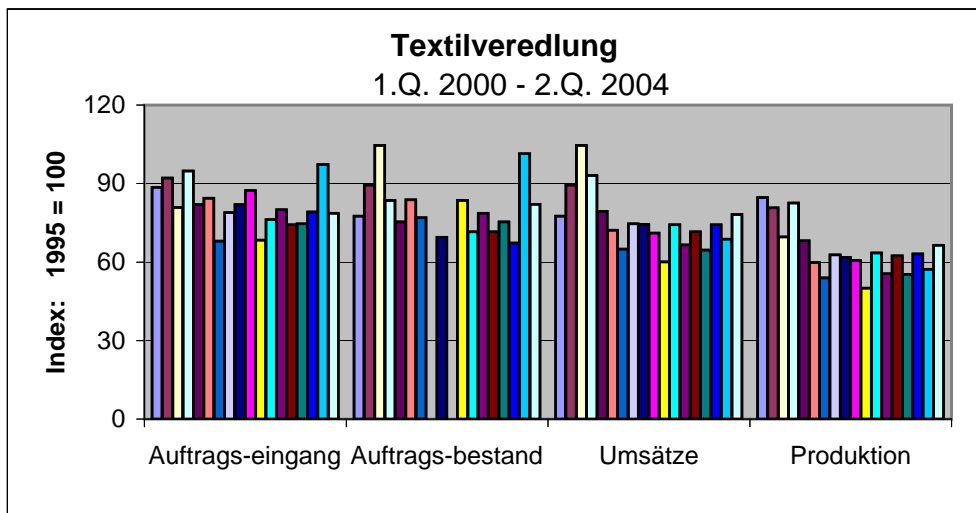


]

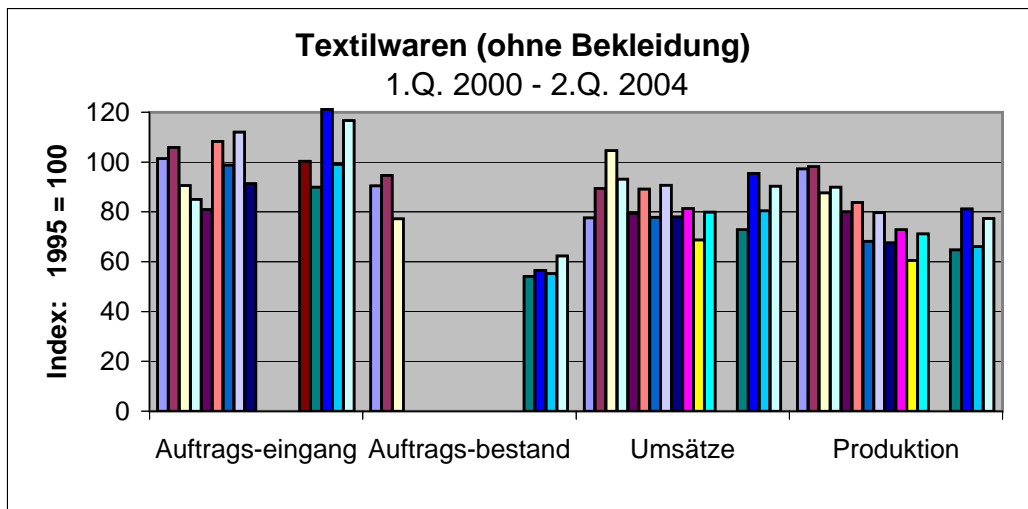
Weberei	Auftrags- eingang	Auftrags- bestand	Umsätze	Produktion
1999				
1. Q.				
2. Q.				
3. Q.	86.4	82.5	72.5	46.8
4. Q.	102.7	82.9	86.9	59.4
2000				
1. Q.	114.7	82.4	95.4	63.7
2. Q.	105.5	82.6	87.7	57.5
3. Q.	93.1	82.6	76.2	48.4
4. Q.	110.7	82.9	88.3	54.5
2001				
1. Q.	110.5	83.2	84.7	52.2
2. Q.	92.5	78.1	70.2	40.7
3. Q.	77.1	76.5	56.9	31.5
4. Q.	77.8	76.0	59.6	33.2
2002				
1. Q.	80.0	69.6	60.0	35.2
2. Q.	78.9	0.0	60.0	33.3
3. Q.	70.8	67.2	49.3	27.7
4. Q.	71.9	57.5	58.5	34.3
2003				
1. Q.	72.9	0.0	53.6	30.4
2. Q.	77.3	0.0	51.4	28.5
3. Q.	67.1	74.2	48.3	27.1
4. Q.	76.9	71.4	58.1	31.3
2004				
1. Q.	77.9	72.6	56.2	33.8
2. Q.	68.9	68.8	55.5	29.3



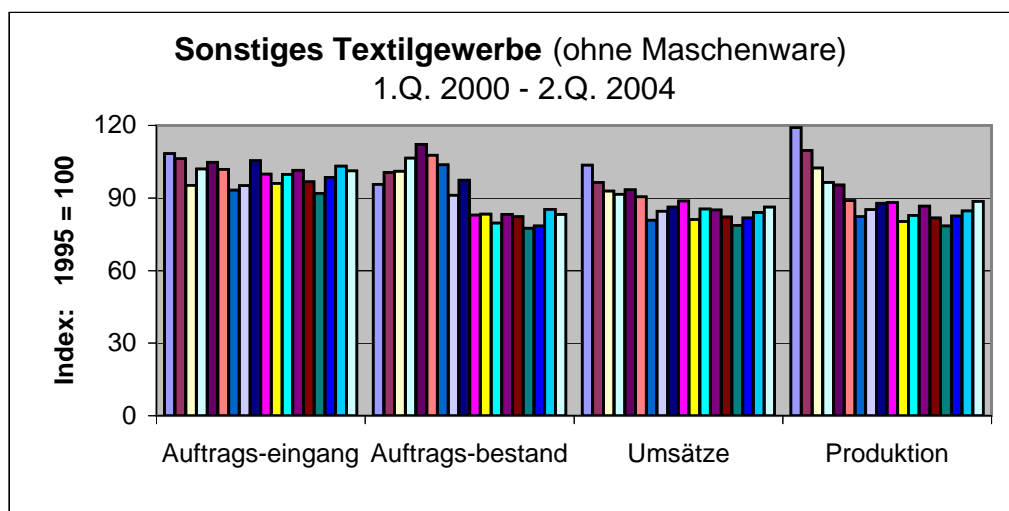
Textilveredlung		Auftrags- eingang	Auftrags- bestand	Umsätze	Produktion
1999	1. Q.				
	2. Q.				
	3. Q.	81.8	93.3	93.3	73.0
	4. Q.	90.3	79.4	79.4	95.4
2000	1. Q.	88.6	77.6	77.6	84.6
	2. Q.	92.1	89.4	89.4	80.7
	3. Q.	80.8	104.6	104.6	69.6
	4. Q.	94.8	83.6	93.1	82.6
2001	1. Q.	82.0	75.3	79.4	68.1
	2. Q.	84.4	83.8	72.2	59.8
	3. Q.	68.0	77.0	64.9	53.9
	4. Q.	78.9	0.0	74.6	62.7
2002	1. Q.	81.9	69.5	74.4	61.8
	2. Q.	87.3	0.0	71.1	60.7
	3. Q.	68.4	83.6	60.1	50.0
	4. Q.	76.2	71.5	74.2	63.5
2003	1. Q.	80.0	78.6	66.5	55.5
	2. Q.	74.3	71.6	71.5	62.4
	3. Q.	74.6	75.3	64.6	55.3
	4. Q.	79.2	67.3	74.2	63.1
2004	1. Q.	97.2	101.4	68.7	57.2
	2. Q.	78.7	82.1	78.2	66.4



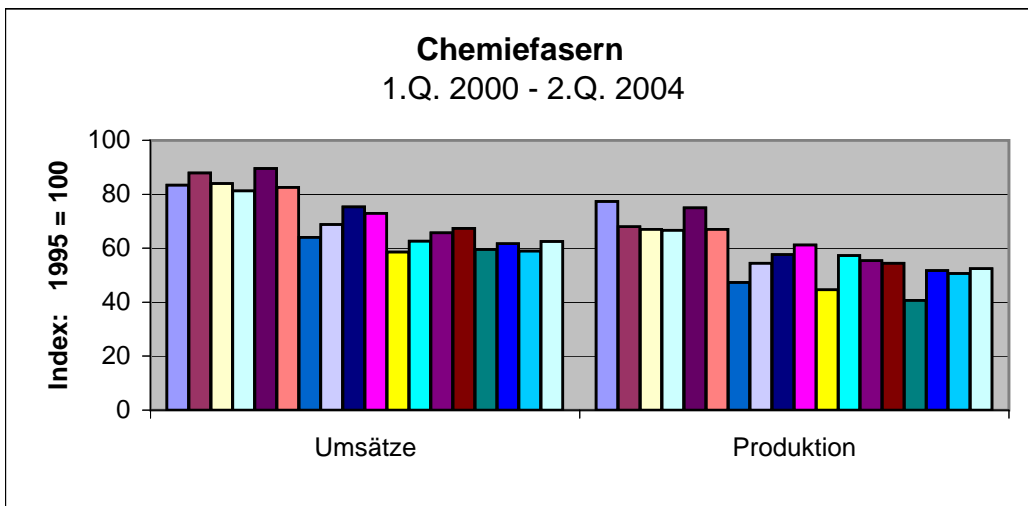
Herstellung Textilwaren (ohne Bekleidung)		Auftrags- eingang	Auftrags- bestand	Umsätze	Produktion
1999	1. Q.				
	2. Q.				
	3. Q.	99.0	92.6	93.3	101.0
	4. Q.	126.1	93.2	79.4	98.0
2000	1. Q.	101.4	90.5	77.6	97.3
	2. Q.	105.9	94.7	89.4	98.2
	3. Q.	90.6	77.2	104.6	87.6
	4. Q.	85.0	0.0	93.1	90.0
2001	1. Q.	81.0	0.0	79.4	80.0
	2. Q.	108.3	0.0	89.2	83.8
	3. Q.	98.8	0.0	77.9	68.2
	4. Q.	112.0	0.0	90.7	79.6
2002	1. Q.	91.4	0.0	78.0	67.6
	2. Q.	0.0	0.0	81.3	72.8
	3. Q.	0.0	0.0	68.8	60.5
	4. Q.	0.0	0.0	79.9	71.2
2003	1. Q.	0.0	0.0	0.0	0.0
	2. Q.	100.4	0.0	0.0	0.0
	3. Q.	89.9	54.1	72.9	64.7
	4. Q.	121.1	56.5	95.4	81.2
2004	1. Q.	99.1	55.2	80.4	66.0
	2. Q.	116.7	62.3	90.3	77.3



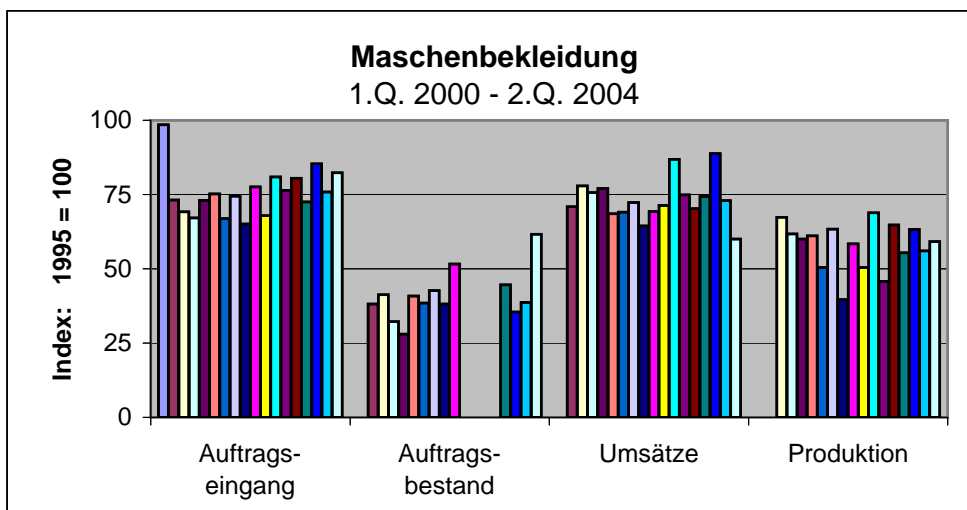
sonstiges Textilgewerbe		Auftrags-eingang	Auftrags-bestand	Umsätze	Produktion
1999	1. Q.				
	2. Q.				
	3. Q.	96.1	86.7	95.0	103.7
	4. Q.	99.9	92.6	93.7	108.9
2000	1. Q.	108.4	95.7	103.6	119.1
	2. Q.	106.3	100.5	96.4	109.7
	3. Q.	95.3	101.1	92.9	102.4
	4. Q.	102.0	106.5	91.5	96.5
2001	1. Q.	104.8	112.2	93.4	95.4
	2. Q.	101.9	107.7	90.5	88.9
	3. Q.	93.3	103.7	80.9	82.3
	4. Q.	95.1	91.1	84.6	85.2
2002	1. Q.	105.4	97.4	86.3	87.9
	2. Q.	99.9	82.9	88.8	88.1
	3. Q.	96.0	83.4	81.1	80.3
	4. Q.	99.8	79.7	85.5	82.8
2003	1. Q.	101.5	83.2	85.1	86.7
	2. Q.	96.7	82.3	82.2	81.7
	3. Q.	92.0	77.5	78.7	78.4
	4. Q.	98.6	78.4	81.7	82.5
2004	1. Q.	103.2	85.3	84.0	84.7
	2. Q.	101.2	83.2	86.3	88.6



Herstellung von Chemiefasern		Umsätze	Produktion
1999	1. Q.		
	2. Q.		
	3. Q.	0.0	0.0
	4. Q.	0.0	0.0
2000	1. Q.	83.4	77.4
	2. Q.	87.9	68.0
	3. Q.	84.0	67.0
	4. Q.	81.2	66.7
2001	1. Q.	89.6	75.0
	2. Q.	82.6	67.0
	3. Q.	64.0	47.3
	4. Q.	68.8	54.5
2002	1. Q.	75.3	57.6
	2. Q.	73.0	61.2
	3. Q.	58.6	44.6
	4. Q.	62.6	57.3
2003	1. Q.	65.7	55.4
	2. Q.	67.4	54.5
	3. Q.	59.6	40.7
	4. Q.	61.7	51.7
2004	1. Q.	59.0	50.6
	2. Q.	62.5	52.4



Gewirkte / gestrickte Fertigungserzeugnisse	Auftrags-eingang	Auftrags-bestand	Umsätze	Produktion
1999				
1. Q.				
2. Q.				
3. Q.	79.5			
4. Q.	88.7			
2000				
1. Q.	98.5			
2. Q.	73.2	38.2	70.9	
3. Q.	69.2	41.3	77.9	67.4
4. Q.	67.1	32.2	75.6	61.7
2001				
1. Q.	73.1	28.0	77.0	60.0
2. Q.	75.2	40.8	68.5	61.1
3. Q.	66.9	38.5	69.1	50.4
4. Q.	74.5	42.7	72.3	63.4
2002				
1. Q.	65.1	38.2	64.4	39.7
2. Q.	77.6	51.6	69.3	58.4
3. Q.	67.9	0.0	71.3	50.4
4. Q.	80.9	0.0	86.9	68.9
2003				
1. Q.	76.4	0.0	74.9	45.8
2. Q.	80.5	0.0	70.3	64.8
3. Q.	72.5	44.6	74.3	55.4
4. Q.	85.3	35.4	88.8	63.3
2004				
1. Q.	75.9	38.7	72.9	56.0
2. Q.	82.3	61.6	60.0	59.2



Herstellung von Bekleidung		Auftrags- eingang	Auftrags- bestand	Umsätze	Produktion
1999	1. Q.				
	2. Q.				
	3. Q.	186.0			
	4. Q.	137.1			
2000	1. Q.	211.8			
	2. Q.	123.3		85.1	
	3. Q.	205.6		132.7	111.6
	4. Q.	129.0		99.8	90.9
2001	1. Q.	110.0	125.7	138.7	112.5
	2. Q.	140.4	136.2	87.2	77.9
	3. Q.	194.8	130.0	136.5	117.7
	4. Q.	158.3	123.3	96.8	82.6
2002	1. Q.	249.4	159.6	129.6	106.9
	2. Q.	125.5	158.7	79.8	76.1
	3. Q.	189.5	130.4	129.3	108.7
	4. Q.	154.2	124.0	97.1	87.2
2003	1. Q.	155.3	131.2	102.1	89.8
	2. Q.	125.7	139.2	78.3	73.9
	3. Q.	160.1	127.5	122.5	102.1
	4. Q.	161.2	134.2	98.5	82.9
2004	1. Q.	209.6	172.0	120.7	106.3
	2. Q.	105.0	167.9	75.9	70.0

